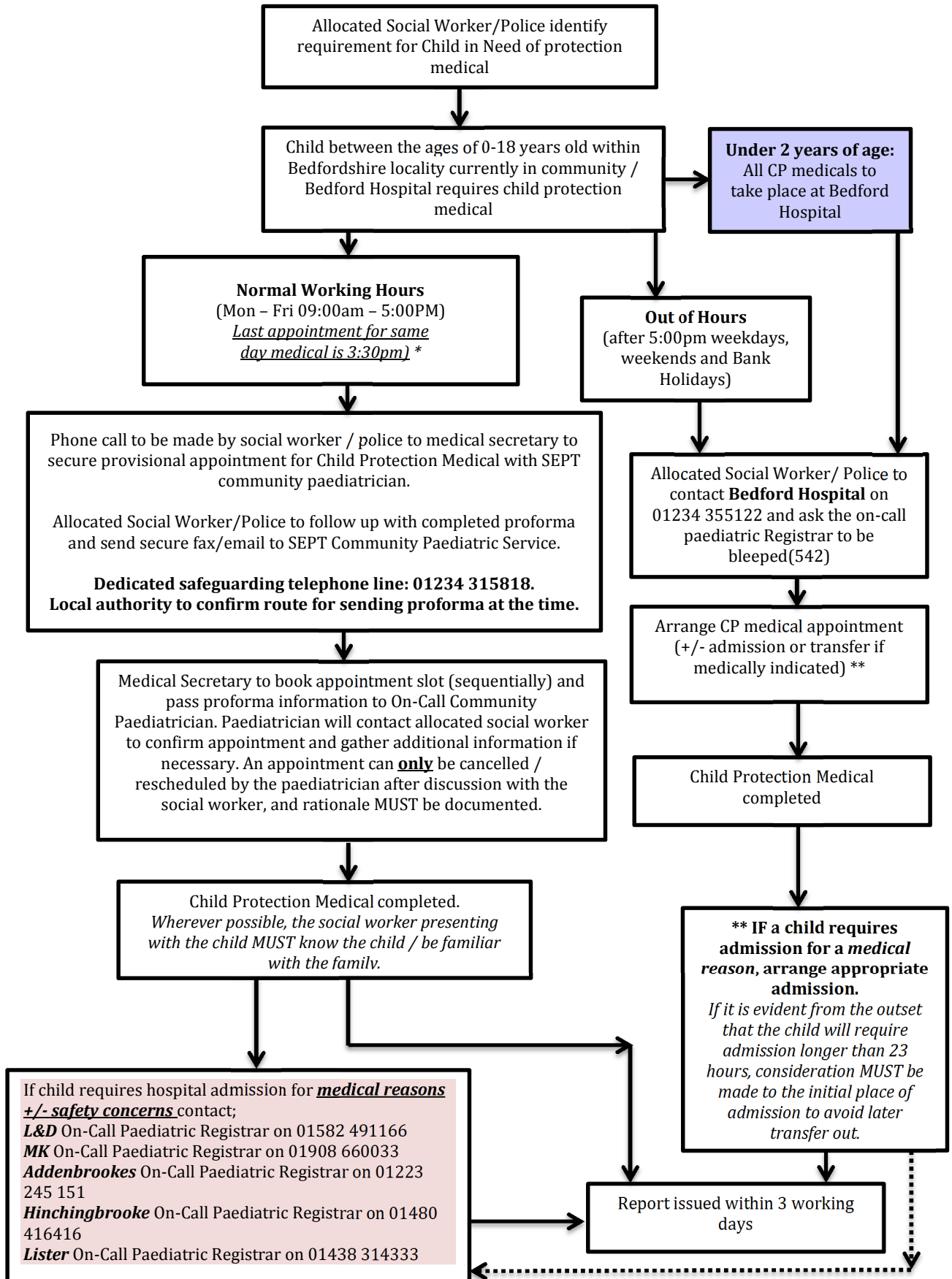


## Process for Child Protection Medicals in Bedfordshire (excluding Luton)



\* Whilst the last appointment for a medical is at 15:30 on weekdays, calls / enquiries to the community paediatricians can be made up until 17:00. If a child requires a medical after 17:00, the community paediatrician on the rota retains responsibility for arranging the next available CP medical appointment.